

Connah's Quay Low Carbon Power

Environmental Statement Volume III
Figure 12-3: Overview of Intertidal Benthic Habitats
within the Study Area

Planning Inspectorate Reference: EN010166

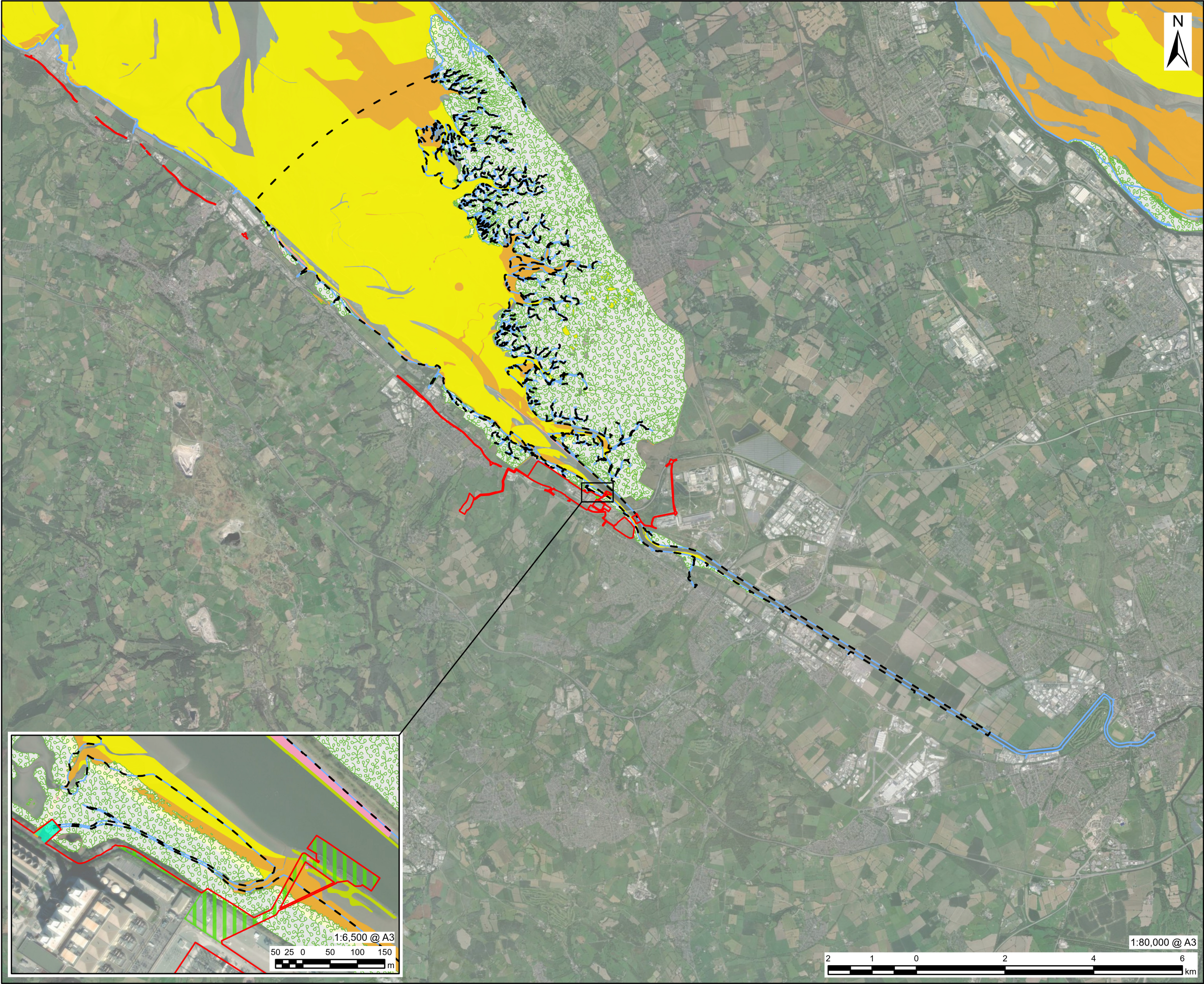
Document Reference: EN010166/APP/6.3

Planning Act 2008 (as amended)

Infrastructure Planning (Applications: Prescribed Forms and Procedure) Regulations 2009 - Regulation 5(2)(a)

Revision 00

August 2025



This drawing has been prepared for the use of AECOM's client. It may not be used, modified, reproduced or relied upon by third parties, except as agreed by AECOM or as required by law. AECOM accepts no responsibility, and denies any liability whatsoever, to any party that uses or relies on this drawing without AECOM's express written consent. Do not scale this document. All measurements must be obtained from the stated dimensions.

PROJECT
Connah's Quay Low Carbon Power

CONSULTANT
AECOM Limited
The Colmore Building
Colmore Circus, Queensway
Birmingham, B4 6AT
www.aecom.com

LEGEND

- Order limits
- Marine Ecology Study Area (10km)
- Surface Water Outfall Area
- Water Connection Corridor (WCC)
- Mean High Water Springs (MHWS)
- Saltmarsh (Wales)¹
- Estuaries (H1130): Reefs (H1170)²**
 - Intertidal Rock (A1)
- Estuaries (H1130): Mudflats and Sandflats Not Covered by Seawater at Low Tide (H1140)²**
 - Intertidal Mixed Sediments (A2.4E)
 - Intertidal Mud (A2.3E)
 - Intertidal Sand and Muddy Sand (A2.2E)

1. Data sourced from DataMapWales Saltmarsh Extents: https://datamap.gov.wales/layers/inspire-nrw-SALTMARSH_EXTENTS.

2. Data sourced from Natural England Marine Habitats and Species Open Data: <https://www.data.gov.uk/dataset/bfc23a6d-8879-4072-95ed-125b091f908a/marine-habitats-and-species-open-data-england>.

NOTES

© Crown Copyright 2025. All rights reserved. Ordnance Survey Licence AC0000808122. Contains Ordnance Survey Data © Crown Copyright and database right 2024. These datasets are available under the Open Government Licence (OGL). See <https://www.data.gov.uk/dataset/bfc23a6d-8879-4072-95ed-125b091f908a/marine-habitats-and-species-open-data-england> for full attribution statement. Contains Natural Resources Wales information © Natural Resources Wales and Database Right. All rights Reserved. Maxar, Microsoft, Earthstar Geographics Full extent of habitats can be seen on Defra's Magic Map Application: <https://magic.defra.gov.uk/magicmap.aspx>

ISSUE PURPOSE
Environmental Statement

DATE
July 2025

PROJECT NUMBER
60717119

FIGURE TITLE
Overview of Intertidal Benthic Habitats within the Study Area

FIGURE NUMBER
Figure 12-3